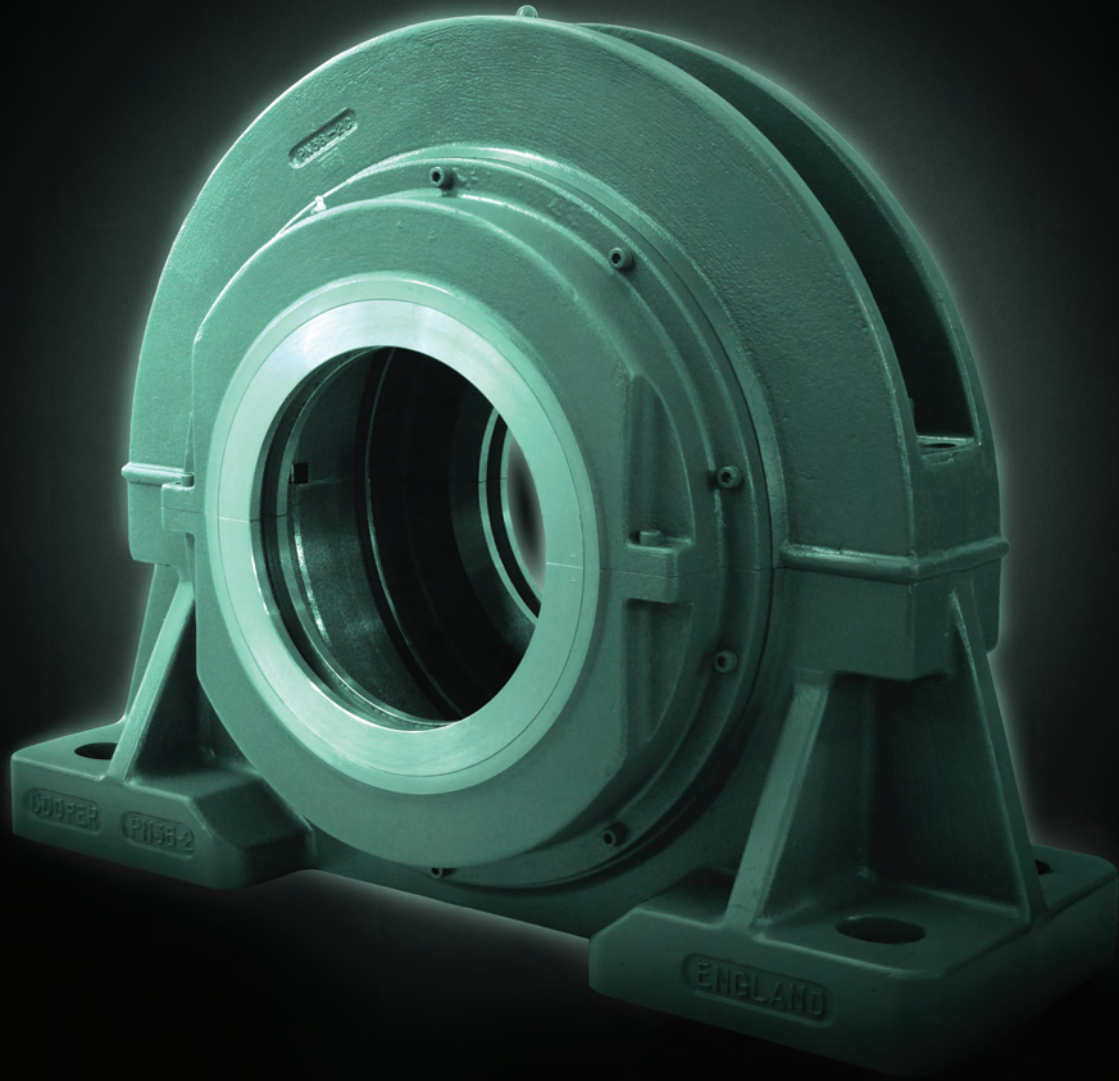


SD HEAVY DUTY BEARINGS



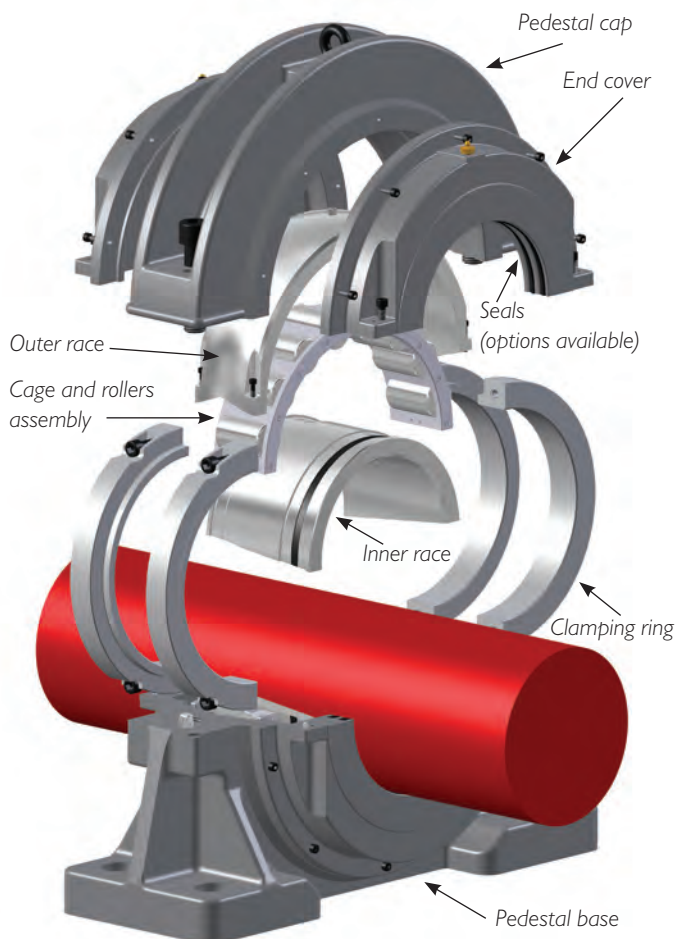
COOPER

SPLIT ROLLER BEARINGS

INTRODUCING SD HEAVY DUTY BEARINGS FROM COOPER

Often, bearings that are sold as economical solutions can end up seriously damaging your budget through inadequate staying-power or through difficult and complex installation, inspection and maintenance.

Cooper SD Heavy Duty (HD) Bearings free you from worries about access, giving you more options in terms of layout design. In the short, medium and longer term, you'll find they measurably reduce downtime, save labour and enable safer working.

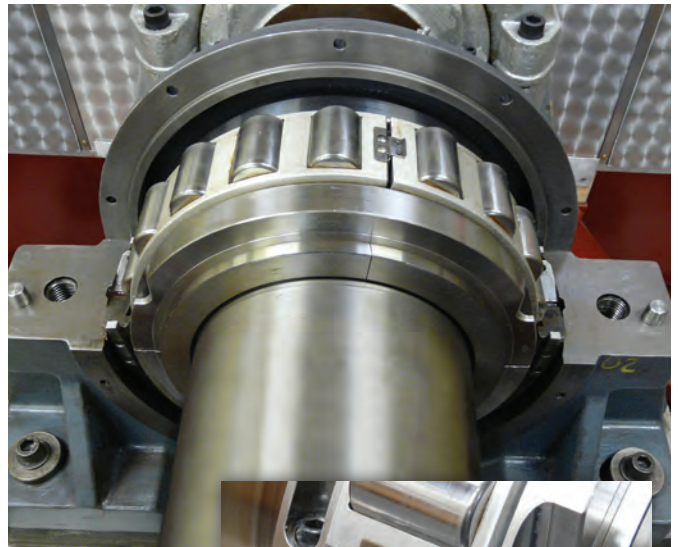


Heavy-duty, high-speed bearings, offering long life and reduced downtime

In a Cooper SD HD bearing, large, robust rollers are contained within thick, ductile iron, SD-compatible pedestals, capable of withstanding all kinds of loads, no matter what their directionality.

Special steel alignment bars prevent any displacement of the race sections, even at high speeds, avoiding the wear and damage characteristic of lower quality bearings.

Combined with highly effective sealing, it all adds up to a longer, more predictable working life, even under extreme conditions.



A partly assembled Cooper SD HD Bearing showing the large, robust rollers. Note (see pull-out) the alignment bars and the ready access to the clamping ring screws.



The bearing that fits your design, your industry and your shaft location

Cooper SD HDB units will fit into any OEM design compatible with the SD specification so widely used across industry.



Their SD credentials make them excellent drop-in replacements in existing plant, while their durable design is at home in dusty, dirty or abrasive applications and severe climatic conditions.



Suitable for shaft diameters from 150 to 240mm, these bearings also offer a full choice of seals (see back) to suit your application.

Finally, their split-to-the-shaft design (see below) means that there is virtually no location, however trapped, in which they cannot be rapidly and safely installed.

Split-to-the-shaft means easier, safer installation, inspection and maintenance

Cooper SD HDB bearings are split all the way through to the shaft itself, making them simple to inspect, disassemble and reassemble, even in the most trapped or cluttered positions. For example, removal of the end covers gives full access to the clamping rings, even when the shaft cannot be rotated.



With no need to dismantle and remove adjacent equipment, no cranes or other heavy lifting gear are needed, and the risk of strain or accident-related injury is reduced. The split design also means that each individual piece of the bearing is lighter, further reducing handling problems.

A bearing that won't keep you waiting

Cooper SD HDB bearings conform to the universal SD standard and are routinely manufactured for stock. Response to orders is therefore extremely prompt, backed by Cooper's efficient internal systems and worldwide presence.

COOPER: ENGINEERING VALUE FAR INTO THE FUTURE

Up-to-the-minute, inventive R&D and the confidence inspired by worldwide applications experience across 100 years of split-bearing innovation: these are the drivers behind any new product from Cooper.

Cooper SD Heavy Duty bearings provide serious, enduring, economically advantageous solutions to tough challenges



faced by industry every day. They offer an excellent opportunity to experience Cooper reliability and convenience.

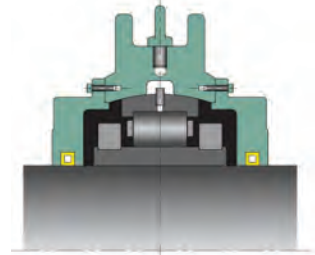
Cooper maintains a comprehensive testing facility for R&D purposes and for customers' projects.

Seals

We can recommend the best sealing method for your application and working conditions, based on extensive experience.

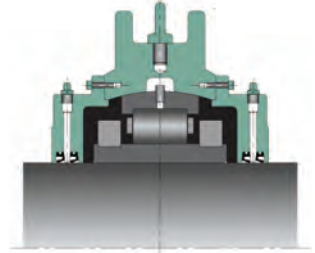
Flexible packing seal (FP)

Suitable for dry applications, including materials handling, this seal consists of braid wound around a flexible core.



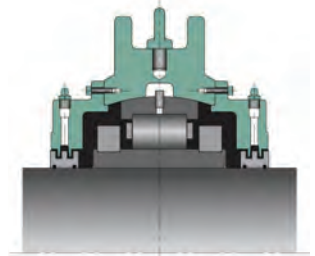
Twin synthetic rubber single lip (SRS)

This seal is appropriate for wet but not submerged conditions. It is available in standard, high-temperature and low-temperature versions.



Aluminium triple labyrinth (ATL)

Often used on fans, this machined, aluminium-bodied seal is ideal for high speed operation. It is available in standard, high-temperature and low-temperature versions.



COOPER BEARINGS GROUP

UK, Europe, South America, Asia, Australia and the Middle East

Cooper Roller Bearings Company Ltd.
Wisbech Road
Kings Lynn, Norfolk, PE30 5JX
United Kingdom

Tel: +44 (0) 1553 763447

Fax: +44 (0) 1553 761113

Email: CoopersalesUK@kaydon.com

USA, Canada, Mexico and Central America

The Cooper Split Roller Bearing Corp.
5365 Robin Hood Road, Suite B
Norfolk, VA 23513
USA.

Tel: +1 (1) 757 460 0925

Fax: +1 (1) 757 464 3067

Email: CoopersalesUS@kaydon.com

Germany

Cooper Geteilte Rollenlager GmbH.
Postfach 100 423
Oberbenrader Str. 407
47704 Krefeld GERMANY

Tel: +49 (0) 2151 713 016

Fax: +49 (0) 2151 713 010

Email: CoopersalesDE@kaydon.com

People's Republic of China

Cooper Bearings Group Beijing.
Room 909, Canway Building Tower 1
No 66, Nanlishi Road, Xicheng District, Beijing
PRC 100045

Tel: +86 (0) 10 68080803

+86 (0) 10 68080805

+86 (0) 10 68080806

Fax: +86 (0) 10 68080801

Email: CoopersalesCN@kaydon.com

Hong Kong

Cooper Roller Bearings (Hong Kong) Co. Ltd.
21st Floor Chinachem Tower
34-37 Connaught Road Central, Hong Kong

Tel: +852 6050 6633

Tel: +86 (0) 135 7010 7075

Email: CoopersalesHK@kaydon.com

Brazil

Cooper do Brasil Ltda.
Caixa Postal 66.105
CEP 05.314-970, Brasil

Tel: +55 (0) 11 3022 3706

Tel: +55 (0) 11 9156 2500

Email: CoopersalesBR@kaydon.com

India

Cooper Roller Bearings Company Ltd.
Wisbech Road
Kings Lynn, Norfolk, PE30 5JX
United Kingdom

Tel: +91 (0) 9820180089

Email: CoopersalesIN@kaydon.com